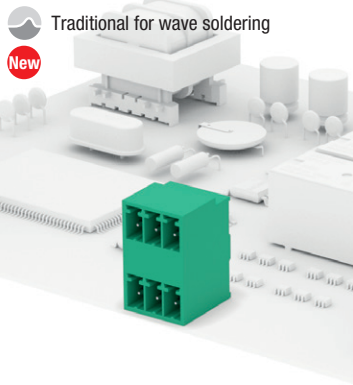


CTM DOUBLE



CTMH DOUBLE

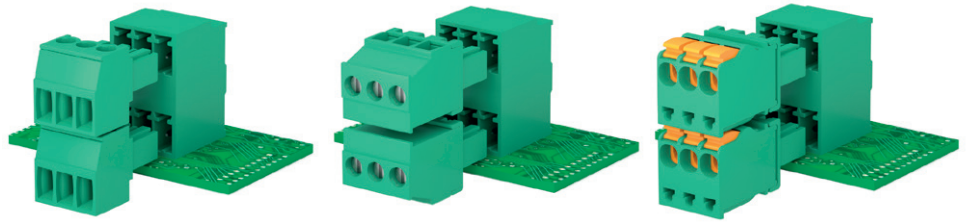
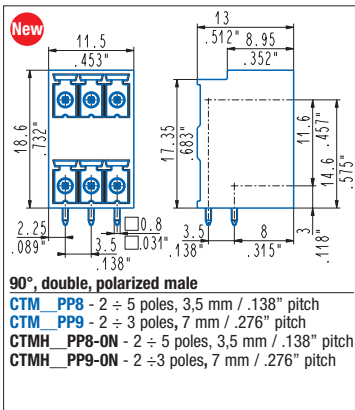


General data

Dimensional class:	low
Standard colour:	green for wave soldering, black for reflow soldering
Pitches:	metric 3.5, 7 mm (.138, .276 in)
PCB thickness:	max 2,4 mm (.094 in)
PCB hole diameter:	min. 1.2 mm (.055 in)
Operating temperature range:	-40 °C ÷ +105 °C (-40 °F ÷ +221 °F)
Contact resistance:	<15 mΩ
Insulation resistance:	>10 ⁹ Ω (500V DC)
Insulating material group:	I (CTI ≥ 600V)

Certifications

UL (n. pending)
300 V - 11 A



CTF

Usable with:

CKF

CBF

