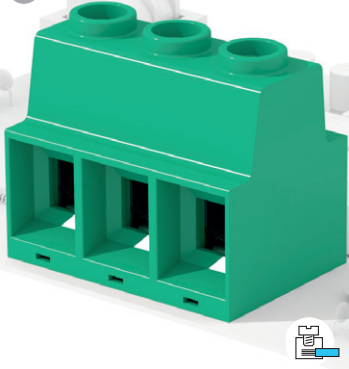


### MPP

Suitable for reflow soldering



### MPPH

**STH**® for reflow soldering



MSL1

#### General data

**Dimensional class:** high  
**Standard colour:** green for wave soldering, black for reflow soldering  
**Pitches:** metric 15 mm (.591 in)  
**Screw dimension:** M5  
**Recommended/highest tightening torque:** 2.1/2.5 Nm (18.59/22.13 lbf-in)  
**PCB thickness:** max. 2.4 mm (.094 in)  
**PCB hole diameter:** min. 1.6 mm (.063 in)  
**Stripping length:** 18 mm (.71 in)  
**Operating temperature range:** -40 °C ÷ +130 °C (-40 °F ÷ +266 °F)  
**STH operating temperature range:** -40 °C ÷ +130 °C (-40 °F ÷ +266 °F)  
**Contact resistance:** <15 mΩ  
**Insulation resistance:** >10<sup>9</sup> Ω (500V DC)  
**Insulating material group:** I (CTI ≥ 600V)

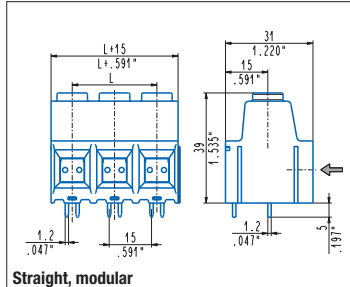
#### Certifications

135 A

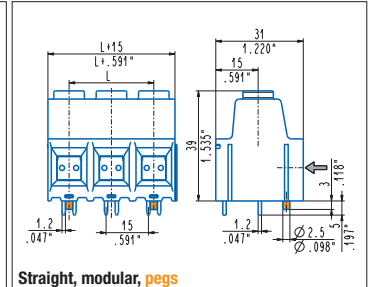
**UL (n. E167473)**  
 600 V - 135 A factory wiring (130 A field wiring) - 20±1 AWG - 2.5 Nm

#### Data according to

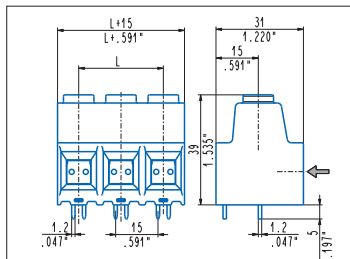
**IEC EN 60947-7-4**  
 1000 V - 125 A - T 110 - 35 mm<sup>2</sup> solid (115 A - 25 mm<sup>2</sup> stranded)



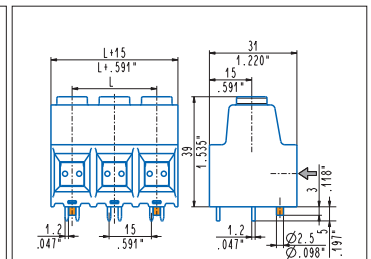
**Straight, modular**  
**MPP\_DQQ** 2÷8 poles, 15 mm .591" pitch  
**MPPH\_DQQ-ON** 2÷8 poles, 15 mm .591" pitch



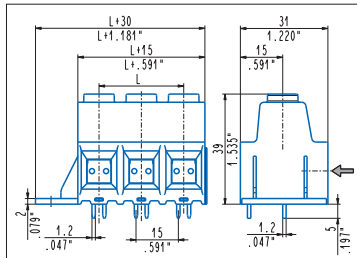
**Straight, modular, pegs**  
**MPP\_DQQ-0000P** 2÷8 poles, 15 mm .591" pitch  
**MPPH\_DQQ-0N00P** 2÷8 poles, 15 mm .591" pitch



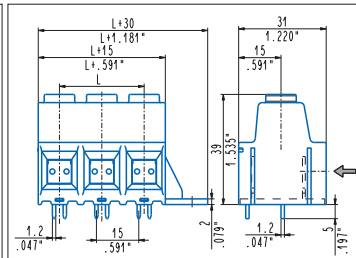
**Straight, side stackable**  
**MPP\_DAQ** 2÷8 poles, 15 mm .591" pitch  
**MPPH\_DAQ-ON** 2÷8 poles, 15 mm .591" pitch



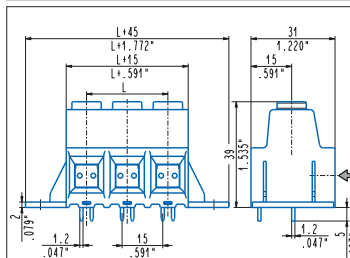
**Straight, side stackable, pegs**  
**MPP\_DAQ-0000P** 2÷8 poles, 15 mm .591" pitch  
**MPPH\_DAQ-0N00P** 2÷8 poles, 15 mm .591" pitch



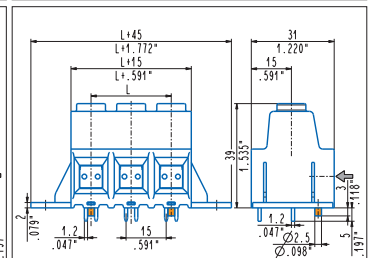
**Straight, modular, mounting flanges**  
**MPP\_DQQ-00S** 1÷8 poles, 15 mm .591" pitch  
**MPPH\_DQQ-0NS** 1÷8 poles, 15 mm .591" pitch



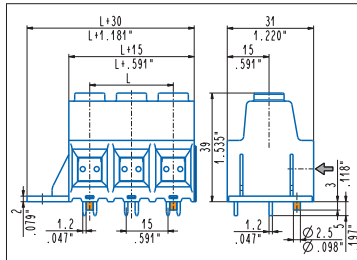
**Straight, modular, mounting flanges**  
**MPP\_DQQ-00D** 1÷8 poles, 15 mm .591" pitch  
**MPPH\_DQQ-0ND** 1÷8 poles, 15 mm .591" pitch



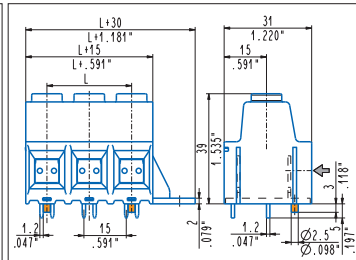
**Straight, mounting flanges**  
**MPP\_DVQ** 1÷8 poles, 15 mm .591" pitch  
**MPPH\_DVQ-ON** 1÷8 poles, 15 mm .591" pitch



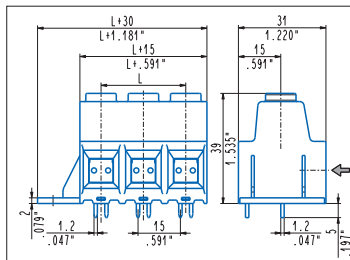
**Straight, mounting flanges, pegs**  
**MPP\_DVQ-0000P** 1÷8 poles, 15 mm .591" pitch  
**MPPH\_DVQ-0N00P** 1÷8 poles, 15 mm .591" pitch



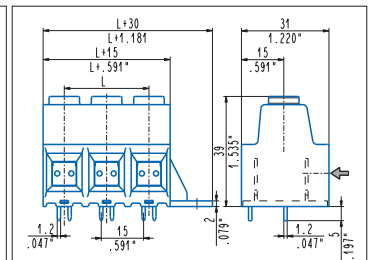
**Straight, left mounting flanges, pegs**  
**MPP\_DQQ-00SOP** 1÷8 poles, 15 mm .591" pitch  
**MPPH\_DQQ-0NSOP** 1÷8 poles, 15 mm .591" pitch



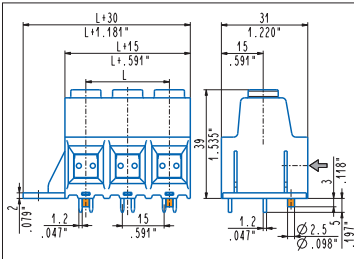
**Straight, right mounting flanges, pegs**  
**MPP\_DQQ-00DOP** 1÷8 poles, 15 mm .591" pitch  
**MPPH\_DQQ-0NDOP** 1÷8 poles, 15 mm .591" pitch



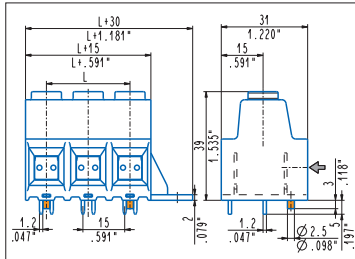
**Straight, side stackable, mounting flanges**  
**MPP\_DAQ-00S** 1÷8 poles, 15 mm .591" pitch  
**MPPH\_DAQ-0NS** 1÷8 poles, 15 mm .591" pitch



**Straight, side stackable, mounting flanges**  
**MPP\_DAQ-00D** 1÷8 poles, 15 mm .591" pitch  
**MPPH\_DAQ-0ND** 1÷8 poles, 15 mm .591" pitch



**Straight, side stackable, flanges, pegs**  
**MPP\_DAQ-00SOP** 1÷8 poles, 15 mm .591" pitch  
**MPPH\_DAQ-ONSOP** 1÷8 poles, 15 mm .591" pitch



**Straight, side stackable, flanges, pegs**  
**MPP\_DAQ-00DOP** 1÷8 poles, 15 mm .591" pitch  
**MPPH\_DAQ-ONDOP** 1÷8 poles, 15 mm .591" pitch