
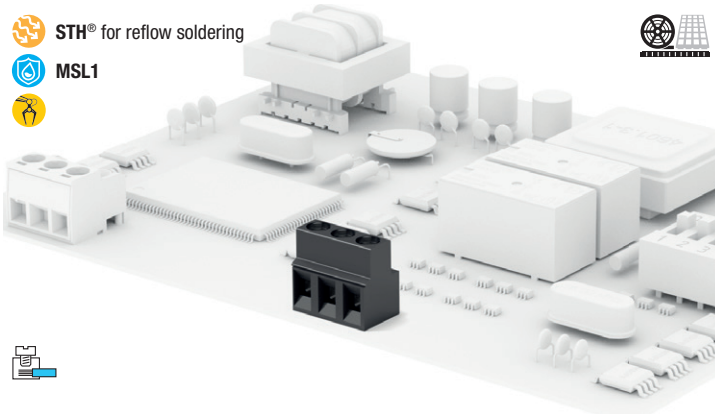


### MSGH

 **STH®** for reflow soldering

 **MSL1**



#### General data

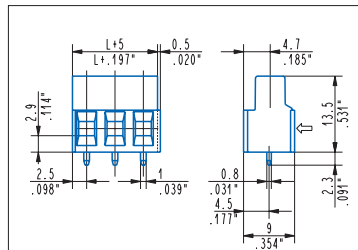
<b>Dimensional class:</b>	medium
<b>Standard colour:</b>	black
<b>Pitches:</b>	metric 5 mm, 7.5 mm, 10 mm (.197 in, .295 in, .394 in) imperial 5.08 mm, 10.16 mm (.200 in, .300 in, .400 in)
<b>Screw dimension:</b>	M3
<b>Recommended/highest tightening torque:</b>	0.5/0.6 Nm (4.42/5.31 lbf-in)
<b>PCB thickness:</b>	max. 2.4 mm (.094 in)
<b>PCB hole diameter:</b>	min. 1.5 mm (.059 in)
<b>Stripping length:</b>	5.5 ÷ 6.5 mm (.22 ÷ .26 in)
<b>Operating temperature range:</b>	-40 °C ÷ +105 °C (-40 °F ÷ +221 °F)
<b>Contact resistance:</b>	<15 mΩ
<b>Insulation resistance:</b>	>10 <sup>9</sup> Ω (500V DC)
<b>Insulating material group:</b>	I (CTI ≥ 600V)

#### Certifications

**UL (n. E167473)** \*factory wiring - \*\*field wiring  
300 V - 17.5 A (\*), 15A (\*\*)- 30÷14 AWG - 7 lbf-in for 5 mm, 5.08 mm, 7.5 mm  
600 V - 17.5 A (\*), 15A (\*\*)- 30÷14 AWG - 7 lbf-in for 10 mm and 10.16 mm pitch

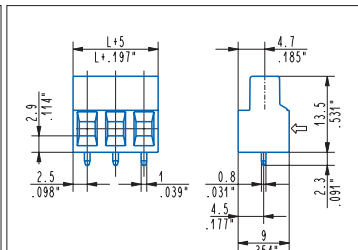
#### Data according to

**IEC EN 60947-7-4**  
250 V - T 110 - 24 A - 2.5 mm<sup>2</sup> solid (17.5 A - 1.5 mm<sup>2</sup> stranded) for 5 mm and 5.08 mm pitch  
750 V - T 110 - 24 A - 2.5 mm<sup>2</sup> solid (17.5 A - 1.5 mm<sup>2</sup> stranded) for 7.5 mm, 7.62 mm, 10 mm and 10.16 mm pitch



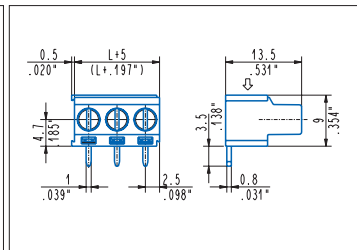
#### Straight, modular, parallel walls

**MSGH\_0M1-ON** 2÷5 poles, 5 mm / .197" pitch  
**MSGH\_0M3-ON** 2÷6 poles, 7.5 mm / .295" pitch  
**MSGH\_0M2-ON** 1÷3 poles, 10 mm / .394" pitch  
**MSGH\_0M5-ON** 2÷12 poles, 5.08 mm / .200" pitch  
**MSGH\_0M6-ON** 1÷6 poles, 10.16 mm / .400" pitch



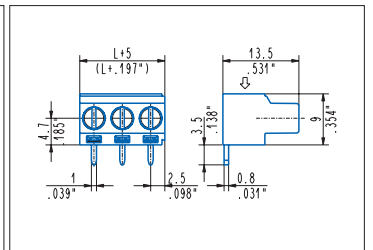
#### Straight, side stackable, parallel walls

**MSGH\_0A1-ON** 2÷5 poles, 5 mm / .197" pitch  
**MSGH\_0A3-ON** 2÷6 poles, 7.5 mm / .295" pitch  
**MSGH\_0A2-ON** 2÷3 poles, 10 mm / .394" pitch  
**MSGH\_0A5-ON** 2÷12 poles, 5.08 mm / .200" pitch  
**MSGH\_0A6-ON** 2÷6 poles, 10.16 mm / .400" pitch



#### 90°, modular

**MSGH\_9M1-ON** 2÷5 poles, 5 mm / .197" pitch  
**MSGH\_9M3-ON** 2÷6 poles, 7.5 mm / .295" pitch  
**MSGH\_9M2-ON** 1÷3 poles, 10 mm / .394" pitch  
**MSGH\_9M5-ON** 2÷5 poles, 5.08 mm / .200" pitch  
**MSGH\_9M6-ON** 1÷3 poles, 10.16 mm / .400" pitch



#### 90°, side stackable

**MSGH\_9A1-ON** 2÷5 poles, 5 mm / .197" pitch  
**MSGH\_9A3-ON** 2÷6 poles, 7.5 mm / .295" pitch  
**MSGH\_9A2-ON** 2÷3 poles, 10 mm / .394" pitch  
**MSGH\_9A5-ON** 2÷12 poles, 5.08 mm / .200" pitch  
**MSGH\_9A6-ON** 2÷3 poles, 10.16 mm / .400" pitch