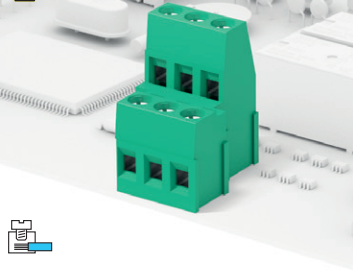


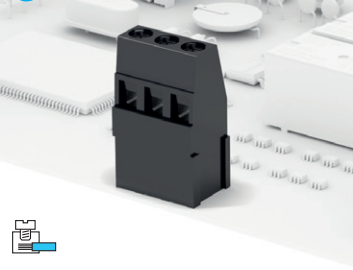
PSM

- Traditional for wave soldering
- For resined PCB
- Suitable for the EX areas



PSMH

- STH® for reflow soldering
- For resined PCB
- MSL1



General data

Dimensional class:	medium
Standard colour:	green for wave soldering, black for reflow soldering
Pitches:	metric 5 mm, 10 mm (.197 in, .394 in) imperial 5.08 mm, 10.16 mm (.200 in, .400 in)
Screw dimension:	M3
Recommended/highest tightening torque:	0.5/0.6 Nm (4.42/5.31 lbf-in)
PCB thickness:	max. 2.4 mm (.094 in)
PCB hole diameter:	min. 1.4 mm (.055 in) / 1.5 mm (.055 in) for STH® version
Stripping length:	5.5 ÷ 6.5 mm (.22 ÷ .26 in)
Operating temperature range:	-40 °C ÷ +120 °C (-40 °F ÷ +248 °F)
Contact resistance:	<15 mΩ
Insulation resistance:	>10 ⁹ Ω (500V DC)
Insulating material group:	I (CTI ≥ 600V)

Certifications

UL (n. E167473)

300 V - 17.5 A - 30÷12 AWG - 7 lbf-in for 5 mm, 5.08 mm pitch
600 V - 17.5 A - 30÷12 AWG - 7 lbf-in for 10 mm and 10.16 mm pitch

VDE (n. 40022741)

250 V - 24 A (20 A for "T" and "K" versions) - 2.5 mm² - T 110 for 5 mm and 5.08 mm pitch
750 V - 24 A (20 A for "T" and "K" versions) - 2.5 mm² - T 110 for 10 mm and 10.16 mm pitch

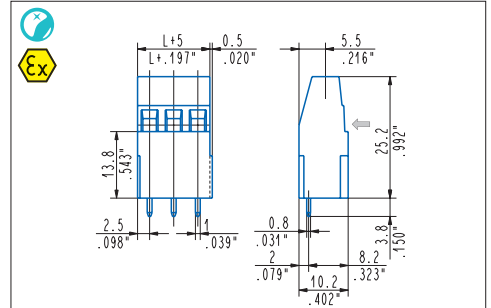
IMQ (n. ED625)

250 V - 24 A - 2.5 mm² - T 110 for 5 mm and 5.08 mm pitch
750 V - 24 A - 2.5 mm² - T 110 for 10 mm and 10.16 mm pitch

CSA (n. LR102896)

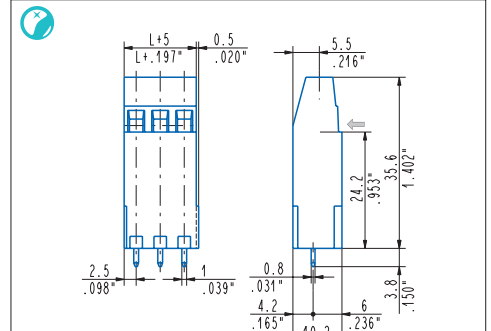
300 V - 17.5 A - 30÷12 AWG for 5 mm, 5.08 mm pitch
600 V - 17.5 A - 30÷12 AWG for 10 mm and 10.16 mm pitch

N.B.: For a higher number of poles, the product will be supplied already side-stacked.



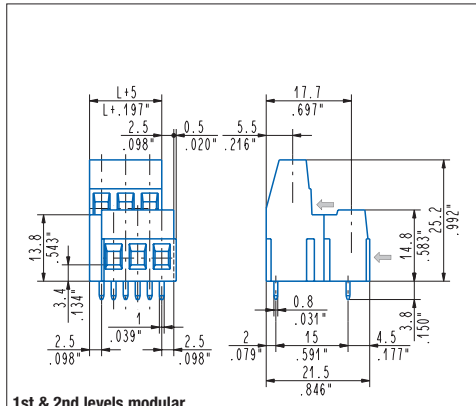
Medium tower modular

- PSM_0M1* - 2 ÷ 8 poles, 5 mm / .197" pitch
 - PSM_0M2* - 1 ÷ 4 poles, 10 mm / .394" pitch
 - PSM_0M5** - 2 ÷ 8 poles, 5.08 mm / .200" pitch
 - PSM_0M6** - 1 ÷ 4 poles, 10.16 mm / .400" pitch
 - PSM_0M1-ONTOOX* - 2÷8 poles, 5 mm / .197" pitch (Ex version)
 - PSM_0M2-ONTOOX* - 1÷4 poles, 10 mm / .394" pitch (Ex version)
 - PSM_0M5-ONTOOX** - 2÷8 poles, 5.08 mm / .200" pitch (Ex version)
 - PSM_0M6-ONTOOX** - 1÷4 poles, 10.16 mm / .400" pitch (Ex version)
 - PSMH_0M1-ON* - 2 ÷ 8 poles, 5 mm / .197" pitch
 - PSMH_0M2-ON* - 1 ÷ 4 poles, 10 mm / .394" pitch
 - PSMH_0M5-ON** - 2 ÷ 8 poles, 5.08 mm / .200" pitch
 - PSMH_0M6-ON** - 1 ÷ 4 poles, 10.16 mm / .400" pitch
- *Single Mould Terminal Blocks / **Assembled Terminal Blocks



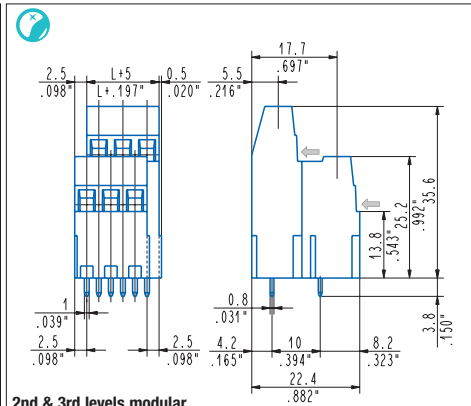
High tower modular

- PSM_0H1* - 2 ÷ 3 poles, 5 mm / .197" pitch
 - PSM_0H2* - 1 ÷ 2 poles, 10 mm / .394" pitch
 - PSM_0H5** - 2 ÷ 3 poles, 5.08 mm / .200" pitch
 - PSM_0H6** - 1 ÷ 2 poles, 10.16 mm / .400" pitch
- *Single Mould Terminal Blocks / **Assembled Terminal Blocks



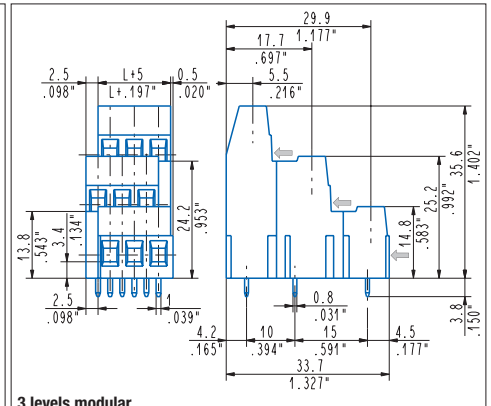
1st & 2nd levels modular

- PSM_0D1* - 2 ÷ 3 poles, 5 mm / .197" pitch
 - PSM_0D2* - 1 ÷ 2 poles, 10 mm / .394" pitch
 - PSM_0D5** - 2 ÷ 3 poles, 5.08 mm / .200" pitch
 - PSM_0D6** - 1 ÷ 2 poles, 10.16 mm / .400" pitch
- *Single Mould Terminal Blocks / **Assembled Terminal Blocks



2nd & 3rd levels modular

- PSM_0K1* - 2 ÷ 3 poles, 5 mm / .197" pitch
 - PSM_0K2* - 1 ÷ 2 poles, 10 mm / .394" pitch
 - PSM_0K5** - 2 ÷ 3 poles, 5.08 mm / .200" pitch
 - PSM_0K6** - 1 ÷ 2 poles, 10.16 mm / .400" pitch
- *Single Mould Terminal Blocks / **Assembled Terminal Blocks



3 levels modular

- PSM_0T1* - 2 ÷ 3 poles, 5 mm / .197" pitch
 - PSM_0T2* - 1 ÷ 2 poles, 10 mm / .394" pitch
 - PSM_0T5** - 2 ÷ 3 poles, 5.08 mm / .200" pitch
 - PSM_0T6** - 1 ÷ 2 poles, 10.16 mm / .400" pitch
- *Single Mould Terminal Blocks / **Assembled Terminal Blocks